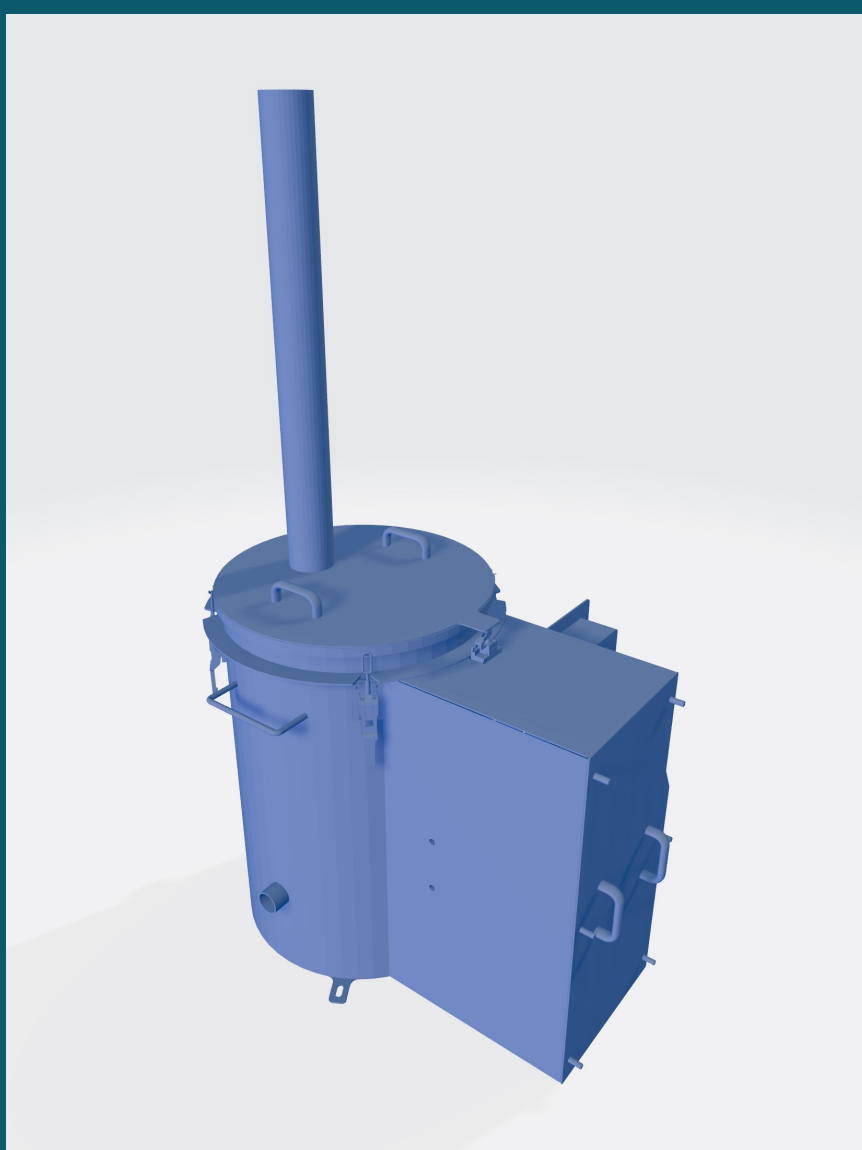


# PULSE 200



**BROCHURE**

## DESCRIPTION

Pulse 200 is a dosing station for bulk materials. It has been developed to provide high durability and reliability in the process of lime dispensing.

Lime is a main bulk good intended for the device.

The principle of operation of the device is dosage of lime in powder form.

Dirty air is being mixed with lime before going into the filter.

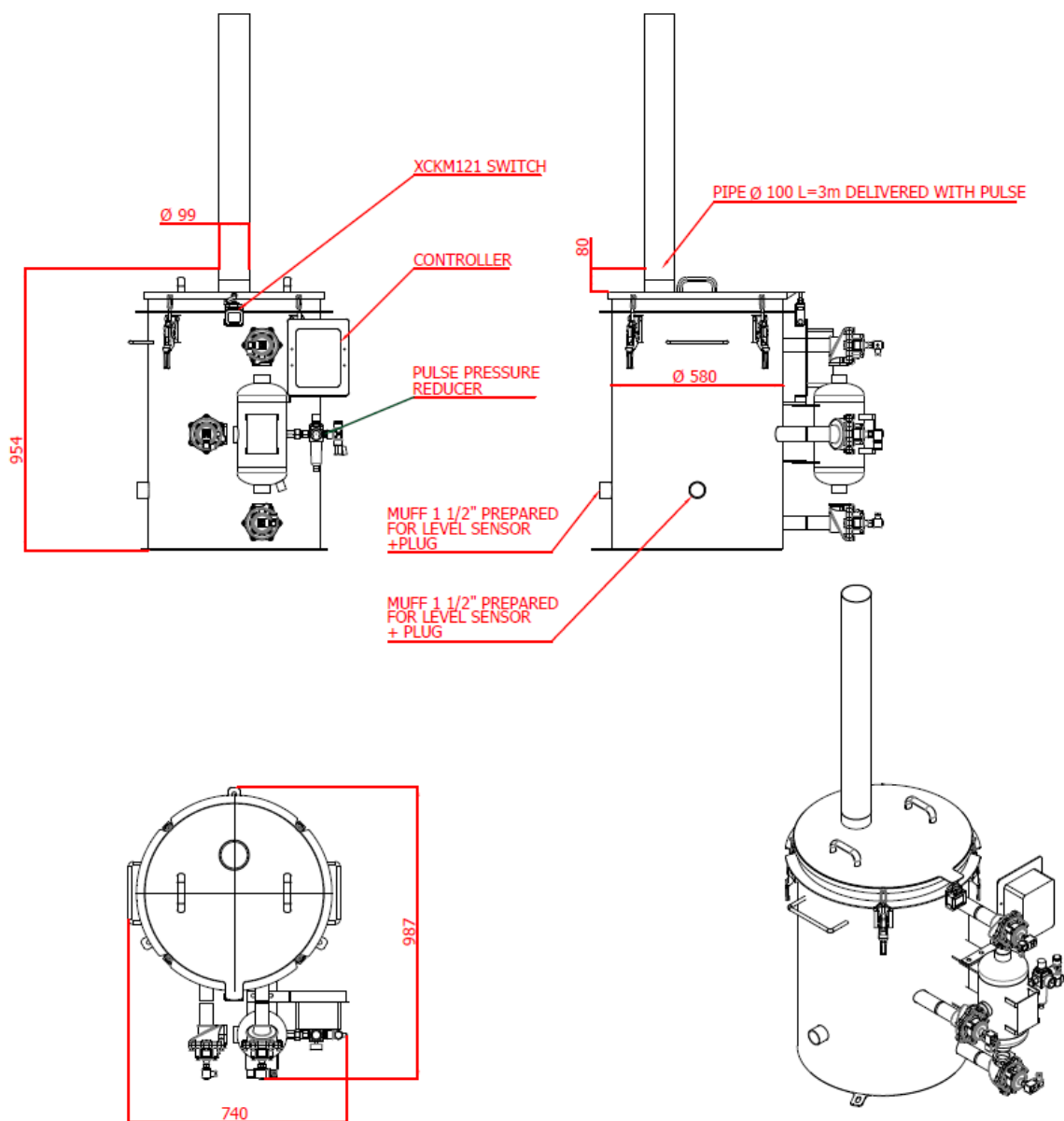
This prevents media from blocking if the dust contains smaller amount of moist or oil.

Dispensing is performed by means of compressed air which is being applied to the barrel/ container by a pulse valve.

As a result, pressure produced bulk material is pressed out through the outlet port opening, having a diameter of 100 mm.



# TECHNICAL DETAILS



DESCRIPTION	DATA
Capacity (kg/hour)	0,2—3,0
Compressed Air (bar)	8
Air consumption (Nm <sup>3</sup> /min)	0,2—0,3
Controller	Pulse pause timer
Electrical Connection (V/Hz/A)	230/50/6
Weight (kg)	110
Other equipment available on request	Silencer box on pneumatics, lime level indicator, different colours



# PULSE 200 BROCHURE

Fabryka Maszyn Pomech S.A.

ul. Wejherowska 43

84-100 Puck

Poland

☎ +48 507 163 602

✉ pomech@pomech.pl

© by Teldust A/S

Made in Denmark

All rights reserved.

Teldust A/S reserves the right to change or discontinue any model or specification at any time and without notice.

Version 1.0

**SEE EGNAR.EU FOR MORE DETAILS**